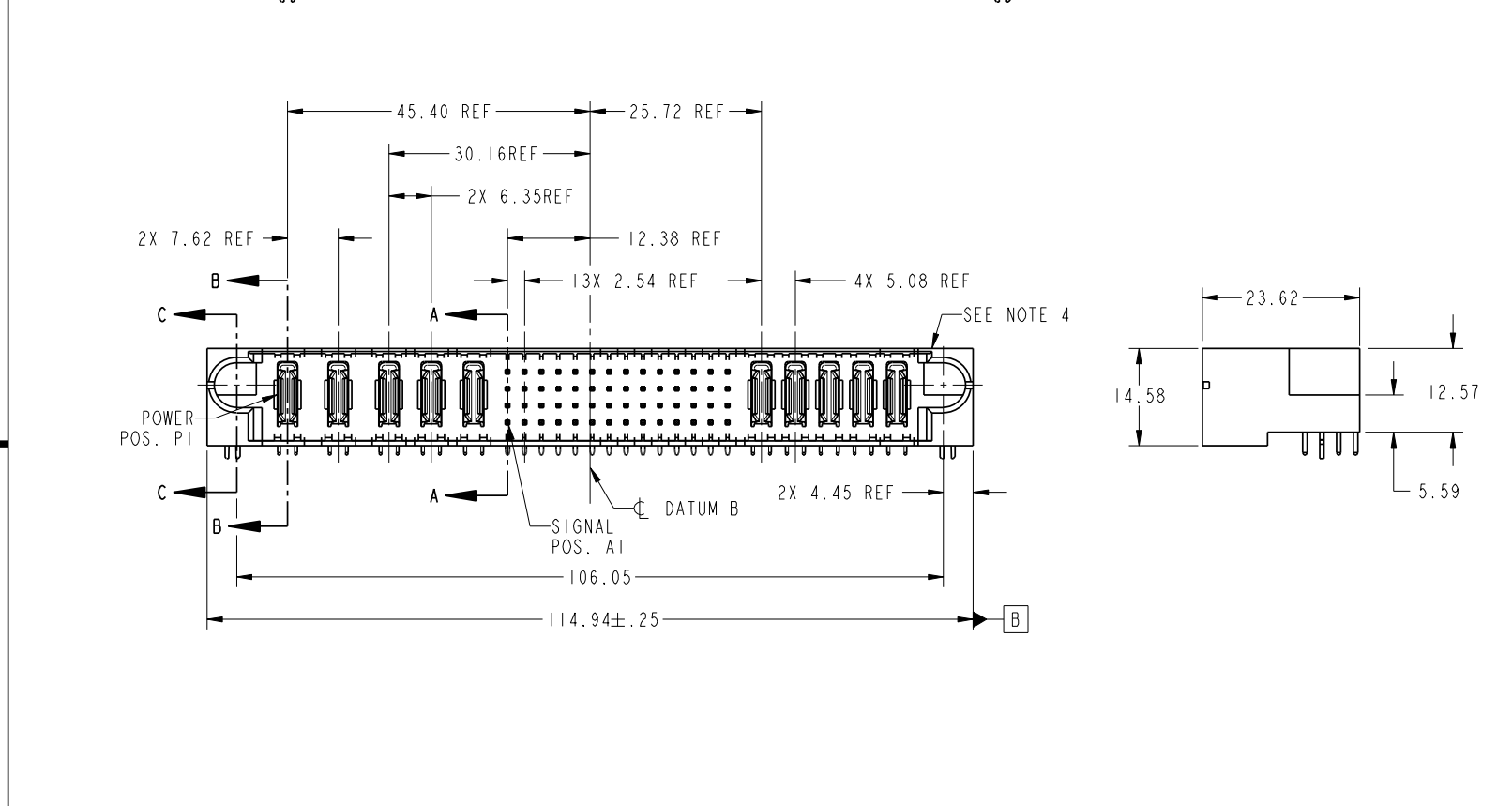
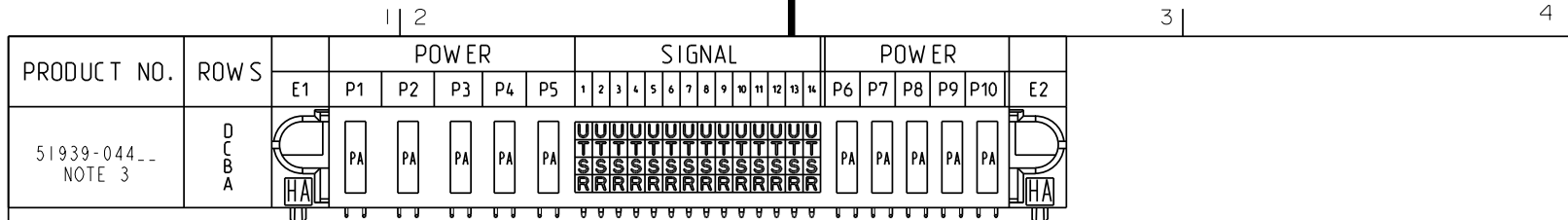


Tous droits strictement reserves. Reproduction ou communication a des tiers interdite sous quelque forme que ce soit sans autorisation ecrite du proprietaire. Propriete de c FCI. Droits de reproduction FCI.



All rights strictly reserved. Reproduction or issue to third parties in any form whatever is not permitted without written authority from the proprietor. Property of FCI. Copyright FCI.



CODE	DIM "M" MATING LENGTH	CONTACT TYPE
U	[6.86]	SIGNAL
T	[6.86]	SIGNAL
S	[6.86]	SIGNAL
R	[6.86]	SIGNAL
PA	[N/A]	POWER
HA	[N/A]	HOLD-DOWN

mat'l code				SEE NOTE		tolerances unless otherwise specified		CUSTOMER	
lfr	ecn no.	dr	date	linear	0.X ± 0.3	COPY			
A	V03-0154	TAB	02/05/03		0.XX ± 0.13	projection			
B	DG07-0441	JULIA	11/05/07	angles	0.XXX ± 0.051				
				dr	T. BRUNGARD 02/05/03				
				enrg	M. MOSTOLLER 02/05/03	scale 1:1			
				chr	M. MOSTOLLER 02/05/03				
				appd	JOSEPH HSIA 02/05/03				
sheet index	revision	B	B	B	B				
	sheet	1	2	3	4				

product family		PwrBlade		code	
3ACP + 2P + 56S + 5P		RIGHT ANGLE SOLDER HEADER		213	
product family	PwrBlade	size	dwg no	sheet	
A	51939-044			1 of 4	

cage code 22526

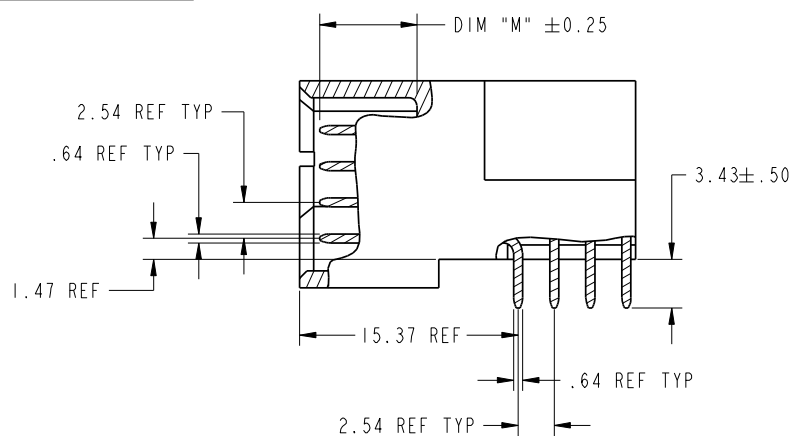
Pro/E

Tous droits strictement reserves. Reproduction ou communication a des tiers interdite sous quelque forme que ce soit sans autorisation écrite du propriétaire. Propriete de c FCI. Droits de reproduction FCI.

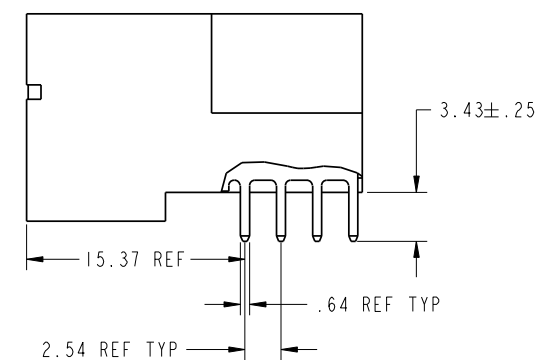


All rights strictly reserved. Reproduction or issue to third parties in any form whatever is not permitted without written authority from the proprietor. Property of FCI. Copyright FCI.

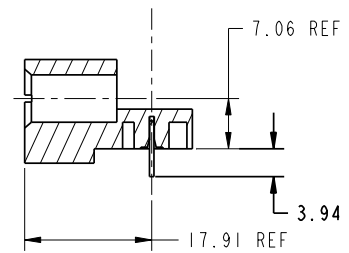
PRODUCT NUMBER  
51939-044\_\_  
NOTE: 3



BROKEN-OUT SECTION A-A  
SCALE 2:1



BROKEN-OUT SECTION B-B  
SCALE 2:1



SECTION C-C

mat'l code				SEE NOTE		tolerances unless otherwise specified		CUSTOMER		FCI		www.fciconnect.com	
lfr	ecr no.	dr	date	linear	0.X ±0.3	projection		COPY		title			
B					0.XX ±0.13	MM		A		3ACP + 2P + 56S + 5P			
				angles	0.XXX ±0.051	1:1		A		RIGHT ANGLE SOLDER HEADER			
				dr	0° ±2°					product family		code	
				enr	T. BRUNGARD 02/05/03					PwrBlade		213	
				chr	M. MOSTOLLER 02/05/03					size		sheet	
				appd	M. MOSTOLLER 02/05/03					51939-044		2 of 4	
					JOSEPH HSIA 02/05/03								
sheet index	revision sheet												

cage code 22526

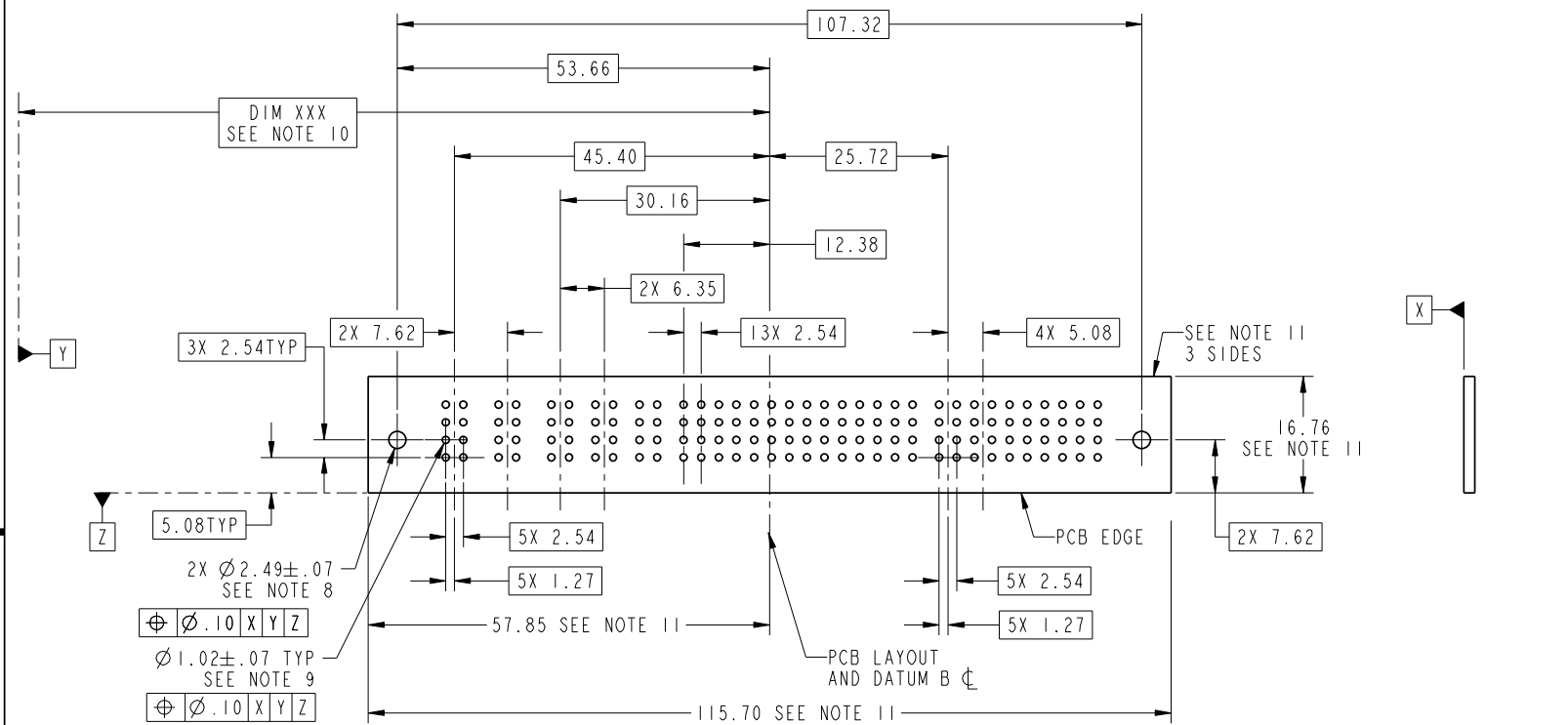
Pro/E

Tous droits strictement reserves. Reproduction ou communication a des tiers interdite sous quelque forme que ce soit sans autorisation écrite du propriétaire. Propriete de c FCI. Droits de reproduction FCI.



All rights strictly reserved. Reproduction or issue to third parties in any form whatever is not permitted without written authority from the proprietor. Property of FCI. Copyright FCI.

PRODUCT NUMBER  
51939-044\_\_  
NOTE: 3



RECOMMENDED PCB LAYOUT

mat'l code				SEE NOTE		tolerances unless otherwise specified		CUSTOMER		FCI		www.fciconnect.com	
lfr	ecr no.	dr	date	linear	0.X ±0.3	projection		COPY		title			
B				angles	0.XX ±0.13					3ACP + 2P + 56S + 5P RIGHT ANGLE SOLDER HEADER			
				dr	0.XXX ±0.051					product family		code	
				enrg	T. BRUNGARD 02/05/03	MM				PwrBlade		213	
				chr	M. MOSTOLLER 02/05/03	1:1				size		sheet	
				appd	M. MOSTOLLER 02/05/03					A		3 of 4	
					JOSEPH HSIA 02/05/03					51939-044			
sheet index	revision sheet												

cage code 22526

Pro/E

Tous droits strictement reserves. Reproduction ou communication a des tiers interdite sous quelque forme que ce soit sans autorisation écrite du propriétaire. Propriete de c FCI. Droits de reproduction FCI.



All rights strictly reserved. Reproduction or issue to third parties in any form whatever is not permitted without written authority from the proprietor. Property of FCI. Copyright FCI.

PRODUCT NUMBER  
51939-044\_\_  
NOTE: 3

NOTES:

1. DIMENSIONS AND TOLERANCES ARE IN ACCORDANCE WITH ASME Y14.5M, 1994 UNLESS OTHERWISE SPECIFIED.

CONNECTOR NOTES:

- 2. HOUSING MATERIAL: UL 94 V-0 GLASS FILLED HIGH-TEMP THERMOPLASTIC  
POWER CONTACT MATERIAL: COPPER ALLOY  
SIGNAL PIN MATERIAL: COPPER ALLOY
- 3. 51939-044; 51939-044LF PLATING SPEC. SEE PRINT:10064183
- 4. MANUFACTURER'S NAME, P/N, AND DATE CODE TO APPEAR ON THIS SURFACE.
- 5. PRODUCT SPECIFICATION GS-12-149.  
APPLICATION SPECIFICATION BUS-20-067.
- 6. PACKAGED IN TRAYS.

PCB NOTES:

- 7. ALL HOLE DIAMETERS ARE FINISHED HOLE SIZE.
- 8. MOUNTING HOLES, WHERE APPLICABLE, ARE UNPLATED.
- 9.  $\varnothing 1.151 \pm 0.025$  DRILLED HOLES PLATED WITH 0.008 MIN SnPb OR Sn OVER 0.03 TO 0.08 Cu PLATING TO ACHIEVE  $\varnothing 1.02 \pm .07$  HOLE.
- 10. "DIM XXX" TO BE DETERMINED BY THE CUSTOMER.
- 11. CONNECTOR KEEP-OUT ZONE.

mat'l code				SEE NOTE		tolerances unless otherwise specified		CUSTOMER		FCI		www.fciconnect.com	
lfr	ecr no.	dr	date	linear	0.X ± 0.3	projection		COPY		title			
B					0.XX ± 0.13					3ACP + 2P + 56S + 5P RIGHT ANGLE SOLDER HEADER			
				angles	0° ± 2°			MM		product family		PwrBlade	
				dr	T. BRUNGARD 02/05/03	scale		1:1		size		dwg no	
				enrg	M. MOSTOLLER 02/05/03					A		51939-044	
				chr	M. MOSTOLLER 02/05/03							213	
				appd	JOSEPH HSIA 02/05/03							sheet	
sheet index		revision sheet										4 of 4	

cage code 22526

Pro/E